



TECHNICAL SPECIFICATIONS - POLYSUR® TYPE 276

	Unit/testing standard	500/3	630/4	800/4	1000/5	1250/5
Construction						
Carcass type		EP	EP	EP	EP	EP
Warp		Polyester	Polyester	Polyester	Polyester	Polyester
Weft		Polyamid	Polyamid	Polyamid	Polyamid	Polyamid
Textile plies		3	4	4	5	5
Type per ply		EP 160	EP 160	EP 200	EP 200	EP 250
Belt thickness nom.	mm	5,5	6,7	8,1	9,4	11,6
Rubber covers top nom.	mm	1,0	1,5	2,0	2,0	2,0
Rubber covers bottom nom.	mm	1,0	1,5	2,0	2,0	2,0
Belt weight nom.	kg/m ²	6,2	7,8	9,7	11,3	15,6
Properties						
Tensile strength	N/mm	>500	>630	>800	>1000	>1250
Elongation at break	%	>10	>10	>10	>10	>10
Elongation at 10% working	%	<1,5	<1,5	<1,5	<1,5	<1,5
Adhesion covers - plies	N/mm	>6	>6	>6	>6	>6
Adhesion between plies	N/mm	>6	>6	>6	>6	>6
Rubber properties						
Type of rubber	Polymeer	NBR	NBR	NBR	NBR	NBR
Oil and fat resistance		excellent	excellent	excellent	excellent	excellent
Swelling in oil IRM 903	72u / 70° C.	<5	<5	<5	<5	<5
Tensile strength	Mpa	>14	>14	>14	>14	>14
Elongation	%	>350	>350	>350	>350	>350
Hardness (+/- 5°)	° Shore A	64 +/- 5	64 +/- 5	64 +/- 5	64 +/- 5	64 +/- 5
Abrasion resistance	mm ³	<180	<180	<180	<180	<180
Additional properties						
Temperature dry, low fat	°C.	-25/+100	-25/+120	-25/+120	-25/+120	-25/+120
Temperature fat and/or moist	°C.	-25/+80	-25/+80	-25/+80	-25/+80	-25/+80
Anti-static <3.10 ⁸	Ω ISO	yes	yes	yes	yes	yes
Flame retardant	ISO conform	no	no	no	no	no
Minimum pulley diameter		300 mm	400 mm	450 mm	500 mm	600 mm
Recommended elevator belt fasteners		Maxi-CI	Maxi-CI/AB Maxi-ULTRA	Maxi-AB Maxi-ULTRA	Maxi-AB Maxi-ULTRA	Maxi-SUPER

Testing norm in accordance with DIN22102, ISO 37, 251, 252, 283, 284, 340, 583, 868, 13934, 2781, 4649, 7619, 9856

Showing values are average values.



**POLYSUR®
TYPE 276 NBR
OIL- AND FAT
RESISTANT
QUALITY**

This proven "ETGX" belt quality is excellent oil-and fat resistant and therefore offers the highest possible degree of resistance against vegetable, animal and mineral oils and fats. This belt quality is also good resistant against a certain amount of acids, lyes and chemicals. Polysur® type 276 has proven itself in elevators operating 24/7 at challenging conditions.

Applications

- animal feed
- crushed soybean and rapeseed
- bituminous products
- fertilizer
- sunflower seed
- fish meal
- derivatives

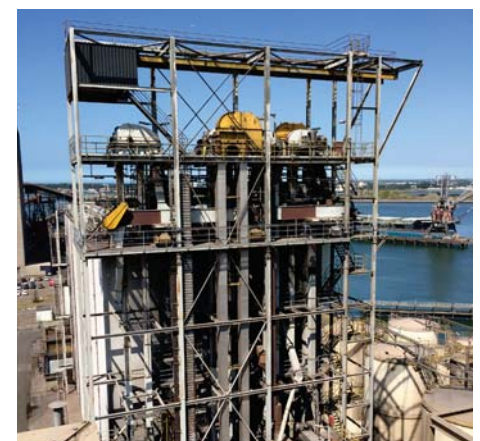
Available from stock

- EP 500/3 1,5+1,5 mm
- EP 630/4 1,5+1,5 mm
- EP 800/4 2,0+2,0 mm
- EP 1000/5 2,0+2,0 mm
- EP 1250/5 2,0+2,0 mm

Other constructions available on request.



Polysur® elevator belts are provided with a Polysur® logo after each 20 meter of elevator belt.



Not legally binding - subject to change and terms
Version 2017 / 1.2

